



Prince Street Myrtleford Victoria 3737
 P.O. Box 530 Myrtleford Victoria 3736 | P. 03 5752 1174 | F. 03 5751 1174 | E. myrtleford.p12@education.vic.gov.au | W. www.myrtlefordp12.vic.edu.au
 Principal ● Zlatko Pear

Inspirational.

Issue 18 : 5th November 2021

Calendar

November

17 Student Free Day

Inside this issue:

Spooky Crossing	2
Canteen news	3
Second Hand Text Book Exchange	4
Year 11 Physics	5
Design and Technology in 7B	6
NAIDOC Activity with Sahara	7
Adaptations in African Animals Year 8 Science	8
Health Corner-Puberty classes	9
Social Enterprise in Year 6	10
In the Community	11

A few words from the Principal.....Zlatko Pear

COVID REGULATIONS

It is pleasing to see that we are slowly returning to 'normal' operations. Inter-school sport, excursions and overnight camps are now permitted. Despite the easing of many restrictions there are a number of rules regarding visitors to schools.

The Government states that;

Parents and carers who enter school buildings must check in using the QR code.

Parents and carers who enter school buildings must also have had at least one dose of COVID-19 vaccine and must have had two doses of COVID-19 vaccine by 29 November 2021 or have a valid medical exception with the following limited exceptions:

- *when attending to administer medical treatment to their own child when the treatment cannot be administered by the school*
- *when attending to collect their child who is unwell and cannot leave the school building unaccompanied by their parent/carer.*
- *when attending for a momentary period that does not involve any sustained contact with staff or students, for example, to collect a completed art project or similar.*

Parents and carers attending any event or activity inside a school building including, but not limited to tours, graduations, kindergarten transition, whole of school events are required to show evidence of vaccination.

Meetings and other discussions (such as Student Support Group meetings) with parents and carers who do not meet vaccination requirements should be held virtually.

Parents and carers attending school sites for drop off and pick up who do not enter school buildings do not need to comply with vaccination requirements.

Please let me know if you have any question regarding vaccination expectations.

2021 No School Days

We have one remaining student free day for this year. This will be on **Wednesday 17th November** – Report Writing Day. This means that there will be no classes running on this day. Please let me know if you have any concerns or questions.

...Zlatko Pear

COLLEGE ANNOUNCEMENTS

The staff carpark is **not** a safe place to drop off your children. Please use the drop off points in Mummery Road (outside the SLC building) or Prince Street (bottom corner of the basketball courts).

PLEASE DO NOT DROP OFF STUDENTS IN THE STAFF CAR PARK



Jenette getting into the spirit of Halloween last week

Being There: Dad dates make each child feel special



Top Tips

- Dad dates are one child at a time.
- Book it in and try not to cancel.
- Focus on connecting.
- It doesn't have to be elaborate.
- It can sometimes be special.
- Really listen to your child on your date.
- The more you do dad dates the easier it is.



www.thefatheringproject.org



Spare Cans or bottles?

One of our parents Tamara Fabris, her Mum and daughter, are off to Uganda next year, and has requested your help to raise money for food packages and sanitary packages for vulnerable people in the Pader district of Uganda.

Any donations of cans or bottles is welcomed to aid their fundraising efforts.

Please contact Tamara for further information or to arrange for collection of your donations.

Ph: 5752 2169
Mobile: 0439 139 720

Canteen News

Please note that the canteen is now operating on usual days.

OPEN MONDAY, THURSDAY AND FRIDAY

CLOSED TUESDAY AND WEDNESDAY

An updated canteen menu will be distributed soon!



Smoothies are back!

BREAKFAST CLUB

Tuesday in the SLA for cheese toasties
Friday in the canteen for toast and cereal

Breakfast is FREE and available for everyone to enjoy



LIBRARY NEWS



Did you know that you can check if your child has a library book?

Head to <http://myrtlefordp12.librarysolutions.com.au> and log on through the “sign in” button on the top right, and then at the sign in page, click on the little ‘G’ (bottom right), and log on using your child’s google classroom log on.

This is also where you can explore the many books we have available in the College library.

If you have any issues with this process, please feel free to email me kathleen.morgan@education.vic.gov.au

Unfortunately at this stage this is only available for Year 3-12 students. Prep-Year 2 students will need to contact me at the library via phone or email, or ask their classroom teacher.

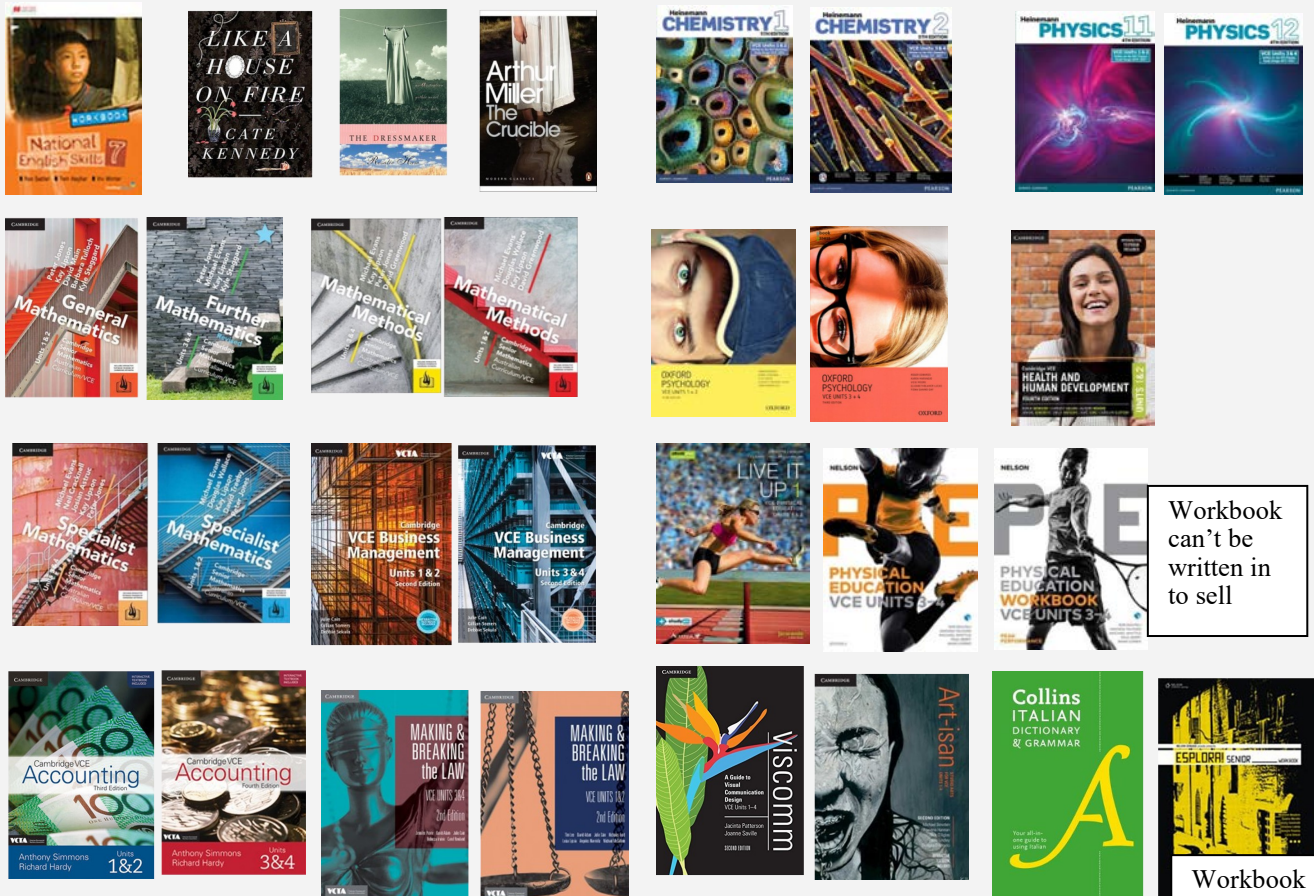
Need to SELL or BUY text books?

Each year we have a second hand book exchange in the library where you can drop off texts for sale, or buy second hand text books for Year 7 English, and all Year 11 and 12 subjects in 2022.

Many parents /students sell their books privately, but the second hand exchange is available for those that want to make use of it.

If you have any of the books below that you would like to be included in the sale, please bring them into the library with your nominated price, and when sold I will contact you to arrange for collection of your money. Please note that there is no guarantee that your book will sell.

If you are looking to purchase from the exchange sale, all sales are made in CASH ONLY– as the money is directly given to the seller. Please note: we cannot reserve books.



Workbook can't be written in to sell

Workbook can't be written in to sell

COVID requirements have changed

To support our efforts to keep all students and staff safe at our school, there are a number of requirements in reference to COVID 19.

QR CODES

QR codes are located at the main entrance to the school, and at the entry to school buildings. For contact tracing purposes, parents should use the QR code at the school entrances when going on-site.

If however the parent/family member is entering a school building, they **MUST sign in at the front office and show proof of vaccination.** Please see information provided in the Principal's messages on the front page.

FACE MASKS

Whilst on site, parents, family members and visitors must abide by the current Chief Health Officer's orders, including social distancing and the wearing of face masks.

Students in Years 3 and above and staff are also currently required to wear face masks whilst indoors.

Be Respectful – Be Responsible – Be a Responsible Community Member – Be Safe

Green Card Winners

Term 4 Week 6



Prepared and ready to participate	Easton Fullwood	Following teacher directions
Keeping my learning space tidy	Shane Barnik	Wearing my uniform proudly
Focussing on my own work	Lily Picciocchi	Using respectful language
Arriving and leaving quietly and safely	Indiana Lindbom	Trying my hardest
Showing kindness to others	Halen McIntyre	
	Beau Sanderson	
	Kiro Fantonalgo	
	Lizzie Larson	
	William Orchiston	
	Isabella Norris	
	Heidi Barry	
	Ruby Thompson	

Congratulations!!

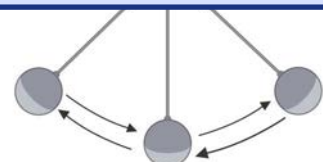


Year 11 Physics

Year 11 Physics students designed and conducted their own pendulum investigation. Liam's pendulum was a very creative set-up, which yielded excellent results.

Students needed to create an experiment to determine the effect of mass, arm length and angle of displacement on the oscillation of a pendulum.

Ms Mitchell



In the Trade Training Centre... with Mr Murray



It was race time again for the Once-a-Semester Pine Racer Challenge. With prizes for the best presented car and the most race wins on the day. The Year 7 students were given the design challenge to build a fast Pine Racer. They researched how to build them and how to make them go fast.

Over 15 heats the winner was decided, Hayden Durling coming out on top with 13 wins, followed by Dane Magyar in second with 12 wins, equal third went to Jac Lewis and Archer Novak with 11 wins.

Best Presented was another tight contest with Zali Morgan and the TACO car taking out top honors.

Design & Technology 7B



NAIDOC Activity Day with Sahara Giles

On Friday 29th October, Sahara Giles from Year 9 planned an activity to do with the P-6 students to acknowledge and celebrate our First Nations People’s culture as part of a NAIDOC event.

Unfortunately, our NAIDOC Day was cancelled due to COVID, so it was wonderful to have Sahara willing and enthusiastic to make the event possible.

She started by getting the students into a Yarning Circle which is an opportunity for people to gather and take part in a group conversation. It can be to discuss issues, to check in with each other, celebrate successes or to investigate inquiry questions. Any topic is possible in a Yarning circle and can happen at any part of the day.



Sahara shared her cultural background, her tribe and where they live. She also acknowledged the traditional owners of the land and paid respect to elders – past, present and emerging.

The rest of the activity centred around all the students contributing to a piece of art that was designed by Jarryd Carberry in Year 7. He designed a canvas print that combined the two flags of the Aboriginal and Torres Strait Islanders as a symbol of bringing these First Nations Peoples together.

This artwork will signify Myrtleford P12’s way of respecting, acknowledging and healing the country- by healing the people. Each student in P-6 added their thumbprint to the canvas to complete the colours.



Thank you, Sahara, for your passion and enthusiasm in this project.

Year 8 Science



Students researched adaptations and environmental needs of an African animal of their choice. They designed and created an enrichment prototype that could be used in a zoo.
Ms Mitchell



HEALTH CORNER...with Adolescent Health Nurse Rosemary Bunge

Puberty classes are up and running for Year 6, and Year 7 and we are looking at healthy relationships

Sexuality education is important and should start when children are young. Talk about feelings, relationships and values. Primary and secondary school children need age-appropriate information about sex and reproduction. At Myrtleford P-12 we will be using a resource developed by the DET as part of standard curriculum. Puberty brings about dramatic physical and emotional changes that may be frightening to an unprepared child. If you have students in Year 6 and 7 now is a good time to be talking to them about growing up. **Ask your child what they learnt today!**

Breakfast is going well, great to be back on Tuesdays in the SLA and Fridays at the canteen.



These students enjoyed Breakfast Club last Friday!



THOUGHT FOR THE WEEK

Learning is a treasure that will follow its owner everywhere.

Chinese Proverb

...Rosemary



SOCIAL ENTERPRISE ACADEMY

YEAR 6 SOCIAL ENTERPRISE



Supporting regional students & worthy causes



Myrtleford P12 College
Inspirational.



ABOUT SOCIAL ENTERPRISE





What do Nick Molnar (an Australian entrepreneur, net worth 200 million) and our year 6s have in common? Well, they both started out their business early in life!

The Year 6 class have started social enterprises to learn about economics, design, prototyping and entrepreneurship and are donating their profits to help a cause they care for.

Buying their products will support our local kids in this journey, giving them the skills and 'know how' to create future employment opportunities for themselves, most importantly, in the Myrtleford community. So get out your cash and spend away!





In the following pages you will find the students' created advertising and order forms for their social enterprises.

To order:
Please fill out the relevant order form and return it to the front office of Myrtleford P-12 College along with cash payment. The students will then contact you when the products are ready for pick up (if you have a student at MP12 it will be sent home with them.)

Alternatively, you can place your order via email to donna.bigger@education.vic.gov.au. Please ensure that you include all the information required for the students to give you the correct products.

Thank you for supporting our local kids!


Check out the Social Enterprise catalogue on the College website
<http://www.myrtlefordp12.vic.edu.au/prepare-year-6-student-work.html>

ALPINE SHIRE COUNCIL IN CONJUNCTION WITH SUN CINEMA BRIGHT BRING YOU THE 2021

FILM MAKING Competition

DO YOU LIVE IN THE ALPINE SHIRE? FANCY YOURSELF AS A WIZZ ON IMOVIE? THINK YOU'VE GOT WHAT IT TAKES TO MAKE A FUN, ENGAGING PIECE OF FILM?

CREATE A 90 SECOND FILM SHOWCASING THE THEME "WHY I LOVE WHERE I LIVE"

THE WINNER WILL HAVE THEIR PIECE SHOWN AT THE CHRISTMAS SERIES OF TWILIGHT CINEMA EVENTS ACROSS THE ALPINE SHIRE, AND WIN SOME GREAT PRIZES.

SUBMIT YOUR ENTRY TO COMMUNITIES@ALPINESHIRE.VIC.GOV.AU BY NOVEMBER 15 2021

FOR ANY QUERIES & FULL COMPETITION RULES, EMAIL COMMUNITIES@ALPINESHIRE.VIC.GOV.AU OR CALL 03 5755 0555

FULL COMPETITION DETAILS & RULES CAN BE FOUND ON THE ALPINE SHIRE COUNCIL WEBSITE & FACEBOOK PAGE

ALPINE SHIRE COUNCIL IN CONJUNCTION WITH SUN CINEMA BRIGHT BRING YOU THE 2021

FILM MAKING Competition

RULES:

- FILM MUST BE WITHIN THE THEME 'WHY I LOVE WHERE I LIVE'.
- YOU MUST BE ABLE TO PROVE YOU LIVE IN THE ALPINE SHIRE.
- CAN BE A SOLO OR TEAM PROJECT.
- FILM MUST BE APPROX 90 SECONDS. ENTRIES THAT ARE TOO SHORT OR TOO LONG WILL NOT BE CONSIDERED.
- THE MAJORITY OF YOUR PROJECT MUST BE FILMED ON PHONE CAMERAS - ONLY SHORT ACTION SEQUENCES CAN BE FILMED ON GOPRO ETC.
- LATE ENTRIES WILL NOT BE ACCEPTED.
- WINNER DECIDED BY ALPINE SHIRE COUNCIL COMMUNITIES TEAM & LOCAL FILM LEGENDS RIC & STAN.
- SUBMIT IN .MOV OR .MP4 FORMATS ONLY PLEASE

SUBMIT YOUR ENTRY TO COMMUNITIES@ALPINESHIRE.VIC.GOV.AU BY NOVEMBER 15 2021

IF YOU NEED MORE INFO EMAIL COMMUNITIES@ALPINESHIRE.VIC.GOV.AU OR CALL 03 5755 0555

FULL COMPETITION DETAILS & RULES CAN BE FOUND ON THE ALPINE SHIRE COUNCIL WEBSITE & FACEBOOK PAGE

Term 4 2 Hour Information Sessions Via Zoom

Raising confident, Competent Children
For parents and carers of children aged between 2-12 years

This sessions looks at

- How we teach our children to be respectful and considerate
- Supporting good communication and social skills.
- Having a healthy self esteem,
- Support problem solving
- Encourage independence

**Friday 22nd October
10am—12pm**

Emotion Coaching — Connecting with our kids
For parents and carers of children aged between 2-10 years

This sessions looks at

- Emotional intelligence and why it's important
- Children's brain devolvement
- How to tune into your children's emotions
- Help manage behaviours,
- Support children to regulate
- Their emotions different styles of parenting

**Wednesday 27th October
7pm—9pm**

Adolescent Parenting
For parents and carers of children aged between 12—18 years

This sessions looks at

- Development of teenager's and it's impacts and challenges
- How we can support your teenager's emotions and build resilience,
- Connecting with your teenager
- Helping to problem solve
- Family values.

Tuesday 16th November 7pm—9pm

The Power of Positive Parenting
For parent and carers of children aged between 2-12 years

This sessions looks at

- Building strong relationships with children,
- Good communication
- Teaching new skills
- Predictable routines
- Expectations of children
- Focusing on the positives
- Balancing family life

**Thursday 18th November
10am -12pm**

Bookings are essential
Contact Andrea on 0457 279 796 to enrol or for more information



W & DJFL

MYRTLEFORD JFC U12'S FOOTBALL 2022!

WHEN - Friday November 12th
TIME - 5:00pm to 6:30pm
WHAT - Football Clinic & AFL9's Games
WHO - All eligible U12's players for 2022 (Born 2010 & 2011 New & Returning Players)
VENUE - McNamara Reserve, Myrtleford

A BBQ will be provided for those in attendance on the evening!

To assist with Covid19 regulations and planning, participants are asked to register via the following link, or simply scan the QR code through your phone camera to access the form.

<https://forms.office.com/r/p8UXTx28s4>

*Spring/Summer Sport
In the Community....*

MYRTLEFORD LAWN TENNIS CLUB

**SATURDAY SENIOR PENNANT
 JUNIOR SATURDAY PENNANT
 THURSDAY LADIES
 COMPETITION
 TUESDAY TWILIGHT TENNIS
 FRIDAY FAMILY NIGHTS
 HOT SHOTS PROGRAM
 COACHING**

For membership forms and club information, please visit our website
www.myrtlefordtennis.com.au

Junior Cricketers Wanted - Ovens Valley United Junior Cricket Club

Calling all Under 14 players!
 We are looking for existing and new junior cricketers, particularly aged Under 14 to join our cricket teams.
 No previous cricket experience is necessary, just an interest in learning to play and having fun.

Training is 1-2 nights per week, and games on Saturday mornings.
 Also still welcoming players for our U12 and U16 teams.
 For further information please contact Josh Hoare, Junior Cricket Coordinator on 0409 501 465
 Register online via our Facebook Page <https://www.facebook.com/groups/661237861049721>

Wellbeing Support during COVID 19 pandemic

FOR STUDENTS

[Beyond Blue Surviving School before, during and after COVID 19.](#)

[A guide to dealing with constant change due to COVID 19](#)

[5 steps to study success at home](#)

[7 tips to help with stress and anxiety](#)

[Tips to keep good mental health](#)

FOR PARENTS

[How to have a great conversation](#)

[Tips for supporting a teenager who is stressed](#)

[Surviving Year 12 \(for parents\)](#)

Our Sponsors.....

Thank you for your ongoing support.



FOODWORKS
Supermarket

91 Myrtle Street
(03) 5752 1573
myrtleford@stores.foodworks.com.au

MYRTLEFORD

OPEN: 7am TO 7pm Mon to Fri
8am to 7pm Sat & Sun
myrtleford.myfoodworks.com.au



WE PROUDLY STOCK THE FULL RANGE OF COLLEGE UNIFORM

67 Clyde St,
Myrtleford
Ph 57522459
billyandme@outlook.com



Myrtleford Cycle Centre
Everyday Cycling Solutions

59 CLYDE STREET MYRTLEFORD
(03) 5752 1511 / 0407 967 309



Alpine Valley Homes
M & S Crisp Builders

Mathew 0429 079 269
Simon 0418 214 025

HIA 501471 DBU 4966

TERRY CARTWRIGHT KITCHENS

3 MCGEEHAN CRES MYRTLEFORD 3737
PO BOX 640 MYRTLEFORD 3737

GEOFF MITCHELL
Director

- Kitchens
- Bathrooms
- Wardrobes
- Wall Units

Ph: 03 5752 2301
Fax: 03 5751 1882
Mobile: 0407 681 014
Web: terrycartwrightkitchens.websyte.com.au
Email: cartwrightkitchens@bigpond.com



0427 272 777

CRISP
MASSAGE

Open: MON/FRI 9am to 6pm
by appointment only



Style Inn
hair & beauty

15 Clyde Street,
Myrtleford
(03) 5751 1567



Food For Families.
Thanks to you.

WAW proudly partnering with Uniting for Food For Families.

Drop off non-perishable food here to help support vulnerable people facing crisis this Christmas.

foodforfamilies.org.au

HEI-TANA FREIGHT

MYRTLEFORD • WANGARATTA • BRIGHT

Owner/Operator - Kane Howell

Phone **0418 577 652**
A/H 03 5752 2531

EMAIL: heitanafreight@gmail.com



WAW

Banking as it should be.

Porepunkah Ski Hire



Gary & Carolyn Monshing

Town Centre, Porepunkah 3740
Ph/Fax: 03 5756 2355
Mobile: 0438 519 217
Email: punkaski@netc.net.au

DARO Business Machines
ALBURY - 490 MACAULEY STREET
WANGARATTA - 17A BAKER STREET



- B/W & Colour Copiers
- Printers Scanners
- Faxes & Projectors
- Copying/laminating
- Service & Much More

DARO
OFFICE MACHINE SPECIALIST

Canon
advanced simplicity

AUTHORISED DISTRIBUTOR
E18/1731 YAG160